

Surface Mount Frequency Mixer

SCM-1+ SCM-1



CASE STYLE:YY109

Level 7 (LO Power +7 dBm) 1 to 500 MHz

Maximum Ratings

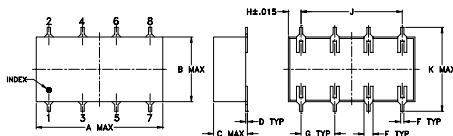
Operating Temperature	-40°C to 85°C
Storage Temperature	-55°C to 100°C
RF Power	50mW
IF Current	40mA
Permanent damage may occur if any of these limits are exceeded.	

Pin Connections

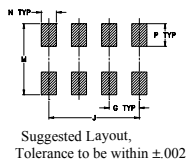
LO	8
RF	1
IF	3,4^
GROUND	2,5,6,7

^ pins must be connected together externally

Outline Drawing



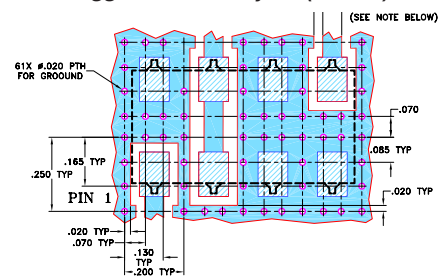
PCB Land Pattern



Outline Dimensions (inch/mm)

A	B	C	D	E	F	G
.75	.38	.20	.010	.050	.020	.200
19.05	9.65	5.08	0.25	1.27	0.51	5.08
H	J	K	M	N	P	wt
.075	.600	.720	.740	.100	.150	grams
1.91	15.24	18.29	18.80	2.54	3.81	1.6

Demo Board MCL P/N: TB-170 Suggested PCB Layout (PL-084)



- NOTES: 1. TRACE WIDTH IS SHOWN FOR ROGERS R04350B WITH DIELECTRIC THICKNESS 0.030" ± 0.002"; COPPER: 1/2 OZ. EACH SIDE. FOR OTHER MATERIALS TRACE WIDTH MAY NEED TO BE MODIFIED.
2. BOTTOM SIDE OF THE PCB IS CONTINUOUS GROUND PLANE.
■ DENOTES PCB COPPER LAYOUT WITH SMOBC (SOLDER MASK OVER BARE COPPER)
■ DENOTES COPPER LAND PATTERN FREE OF SOLDER MASK

Notes

- A. Performance and quality attributes and conditions not expressly stated in this specification document are intended to be excluded and do not form a part of this specification document.
B. Electrical specifications and performance data contained in this specification document are based on Mini-Circuit's applicable established test performance criteria and measurement instructions.
C. The parts covered by this specification document are subject to Mini-Circuit's standard limited warranty and terms and conditions (collectively, "Standard Terms"); Purchasers of this part are entitled to the rights and benefits contained therein. For a full statement of the Standard Terms and the exclusive rights and remedies thereunder, please visit Mini-Circuit's website at www.minicircuits.com/MCLStore/terms.jsp

Features

- low conversion loss, 5.72 dB typ.
- excellent L-R & L-I isolation, 45 dB typ.
- IF response to DC

Applications

- VHF/UHF
- defense-federal communications
- instrumentation

+RoHS Compliant

The +Suffix identifies RoHS Compliance. See our web site for RoHS Compliance methodologies and qualifications

Electrical Specifications

FREQUENCY (MHz)	CONVERSION LOSS (dB)	LO-RF ISOLATION (dB)			LO-IF ISOLATION (dB)			IP3 at center band (dBm)										
		L	M	U	L	M	U											
LO/RF	Mid-Band																	
f _L -f _U	\bar{X} σ Max.	Total Range Max.																
1-500	DC-500	5.72	0.10	7.0	8.0	60	40	45	35	40	30	50	40	45	35	40	25	10

1 dB COMP.: +1 dBm typ.

L = low range [f_L to 10 f_L]

m = mid band [2f_L to f_U/2]

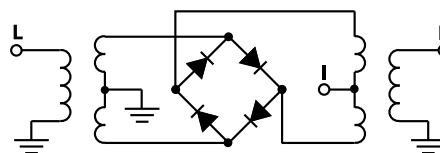
M = mid range [10 f_L to f_U/2]

U = upper range [f_U/2 to f_U]

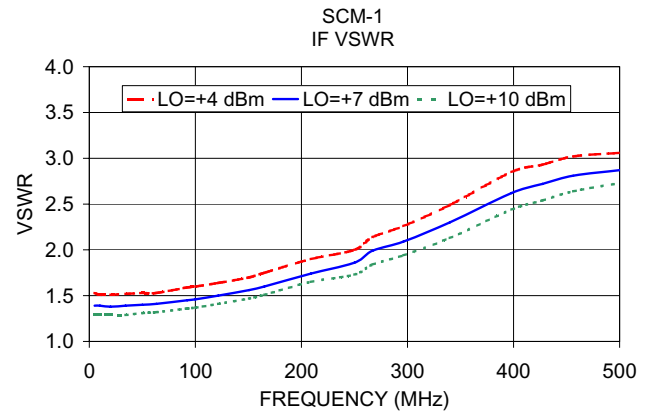
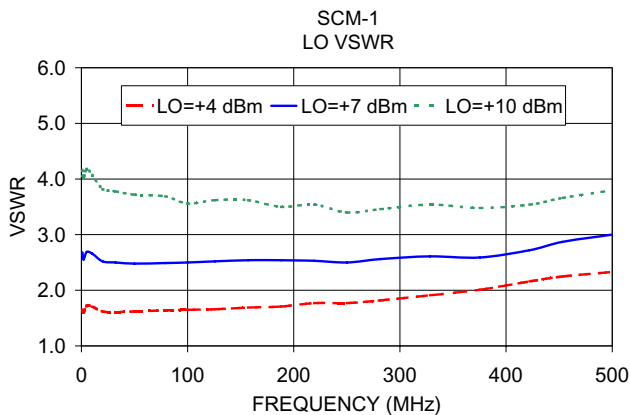
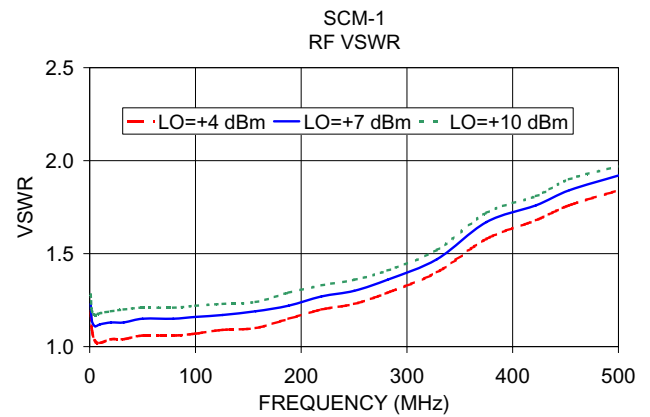
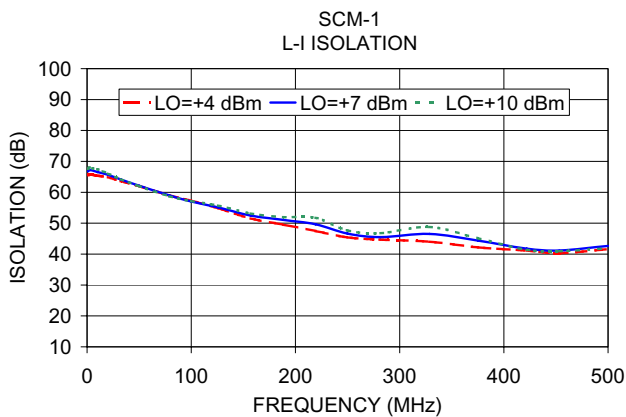
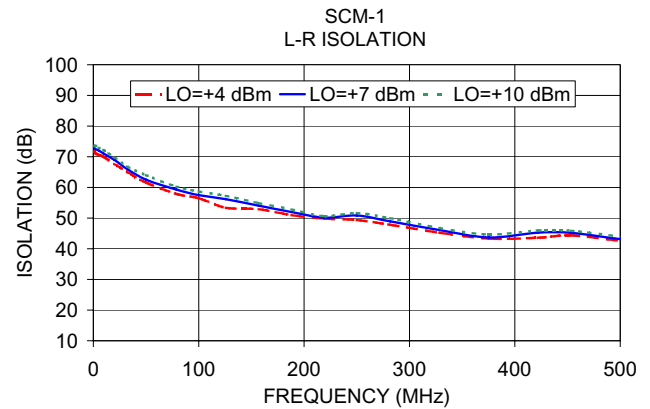
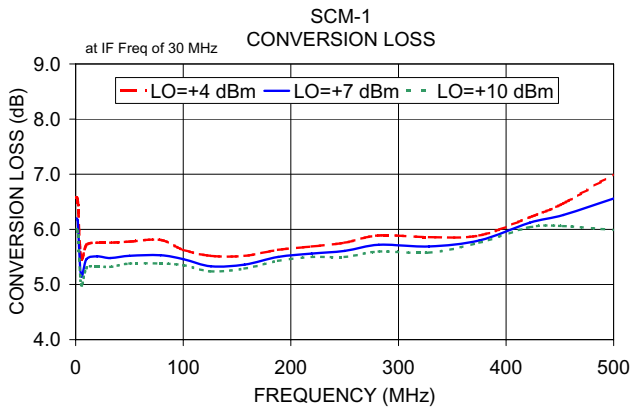
Typical Performance Data

Frequency (MHz)	Conversion Loss (dB)	Isolation L-R (dB)	Isolation L-I (dB)	VSWR RF Port (:1)	VSWR LO Port (:1)	
						LO +7dBm
RF	LO	LO +7dBm	LO +7dBm	LO +7dBm	LO +7dBm	
1.00	31.00	6.20	72.88	66.78	1.23	2.68
2.00	32.00	6.16	72.45	67.15	1.14	2.55
5.00	35.00	5.16	72.07	67.07	1.11	2.69
10.00	40.00	5.46	70.97	66.57	1.12	2.66
20.00	50.00	5.51	68.99	65.69	1.13	2.52
32.19	62.19	5.48	65.97	64.17	1.13	2.50
50.00	80.00	5.52	62.51	62.11	1.15	2.48
78.97	48.97	5.53	59.28	58.98	1.15	2.49
100.00	70.00	5.46	57.50	57.03	1.16	2.50
125.75	95.75	5.33	56.16	55.12	1.17	2.52
156.94	126.94	5.36	54.05	52.46	1.19	2.54
188.13	158.13	5.50	51.97	51.08	1.22	2.54
219.31	189.31	5.56	50.13	49.66	1.27	2.53
250.00	220.00	5.61	50.85	46.65	1.30	2.50
281.69	251.69	5.72	48.93	45.50	1.36	2.56
328.47	298.47	5.69	46.10	46.51	1.47	2.61
375.25	345.25	5.80	43.70	44.36	1.67	2.59
422.03	392.03	6.12	45.26	41.75	1.76	2.72
453.22	423.22	6.26	45.18	41.16	1.84	2.87
500.00	470.00	6.56	43.13	42.64	1.92	3.00

Electrical Schematic



Performance Charts



Notes

- A. Performance and quality attributes and conditions not expressly stated in this specification document are intended to be excluded and do not form a part of this specification document.
- B. Electrical specifications and performance data contained in this specification document are based on Mini-Circuit's applicable established test performance criteria and measurement instructions.
- C. The parts covered by this specification document are subject to Mini-Circuits standard limited warranty and terms and conditions (collectively, "Standard Terms"); Purchasers of this part are entitled to the rights and benefits contained therein. For a full statement of the Standard Terms and the exclusive rights and remedies thereunder, please visit Mini-Circuits' website at www.minicircuits.com/MCLStore/terms.jsp

